

WELCOME



SUNRISE HI TECH

**COATING & FLOORING
SERVICES**

WWW.SUNRISEHITECH.IN





ABOUT COMPANY

Sunrise Hitech is a leader in high-performance flooring and structural protection. We specialize in providing **durable, aesthetic, and industrial-grade surfaces** tailored to the specific needs of our clients. From heavy-duty industrial plants to luxury commercial spaces, we deliver excellence underfoot.

14+ Years of
Expertise

365+ Projects
Completed

100% Customer
Satisfaction

OUR VISION

To be the most trusted name in **innovative flooring solutions**, setting benchmarks in quality, durability, and sustainability.

OUR MISSION

To **provide high-quality, long-lasting surface treatments** using advanced technology and expert craftsmanship to protect and beautify every space.

About Us

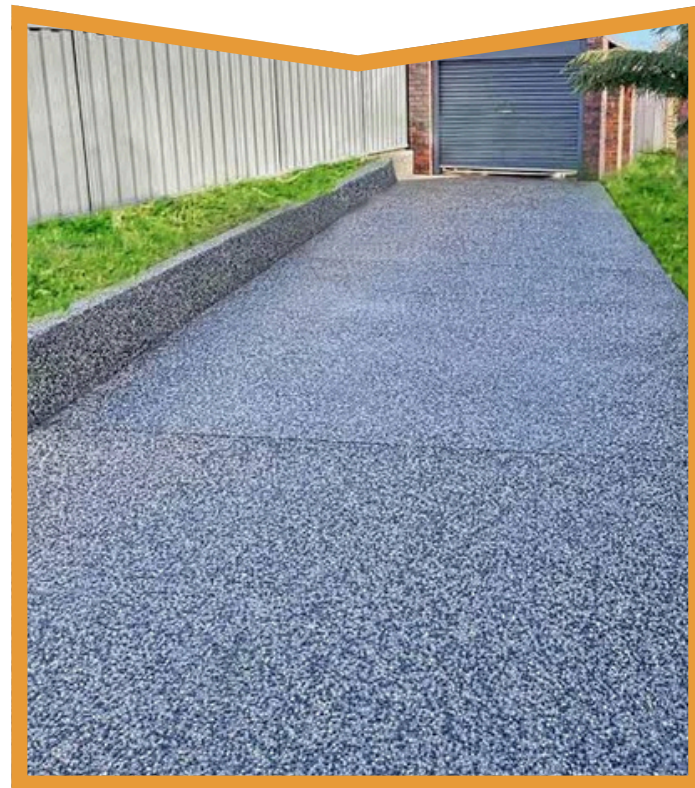


INDUSTRIES WE SERVE

We provide specialized flooring for various sectors,
including



Industrial Flooring Zones



Car Parking Areas



Sports Area Flooring



**Waterproofing Treatment
Zones**



Industrial Paint Surfaces

OUR SPECIALIZED SERVICES

We provide specialized flooring for various sectors, including

1. EPOXY FLOORING

Epoxy flooring is a high-performance coating that bonds chemically with concrete to create a seamless, hard-wearing, and chemical-resistant surface.

Benefits:

- CHEMICAL RESISTANCE
- HIGH DURABILITY
- EASY MAINTENANCE:

Types of Epoxy Flooring

INDUSTRIAL EPOXY

ANTISTATIC EPOXY

METALLIC EPOXY



2. PU CONCRETE

A thick, heavy-duty polyurethane system designed for extreme environments, offering unmatched thermal shock resistance and hygienic performance.

Benefits:

- THERMAL STABILITY
- IMPACT RESILIENCE
- HYGIENIC SURFACE

Types of PU Concrete

PU SCREED

PU UCRETE



3. WATERPROOFING

Essential protective barriers designed to seal surfaces and prevent water penetration, protecting the building's structural integrity.

Benefits:

- STRUCTURAL PROTECTION
- MOLD PREVENTION
- LONG-TERM SAVINGS

Types of Waterproofing

TERRACE/ROOF

BATHROOMS/KITCHEN

BASEMENT PRESSURE GROUTING



4.CONCRETE POLISHING

A mechanical process that transforms raw concrete into a high-gloss, dust-proof floor using diamond grinding and chemical densifiers.

Benefits:

- ECO-FRIENDLY:
- DUST-PROOF
- HIGH REFLECTIVITY

Types of Concrete Polishing

LITHIUM-BASED

SILICATE-BASED POLISHING



5.TERRAZZO

A premium decorative floor where marble, quartz, or glass chips are embedded in a binder and polished to a luxurious finish.

Benefits:

- BESPOKE DESIGN:
- EXTREME LONGEVITY
- LOW MAINTENANCE

Types of Terrazzo Flooring

EPOXY TERRAZZO

CEMENTITIOUS TERRAZZO



6. PU COATING

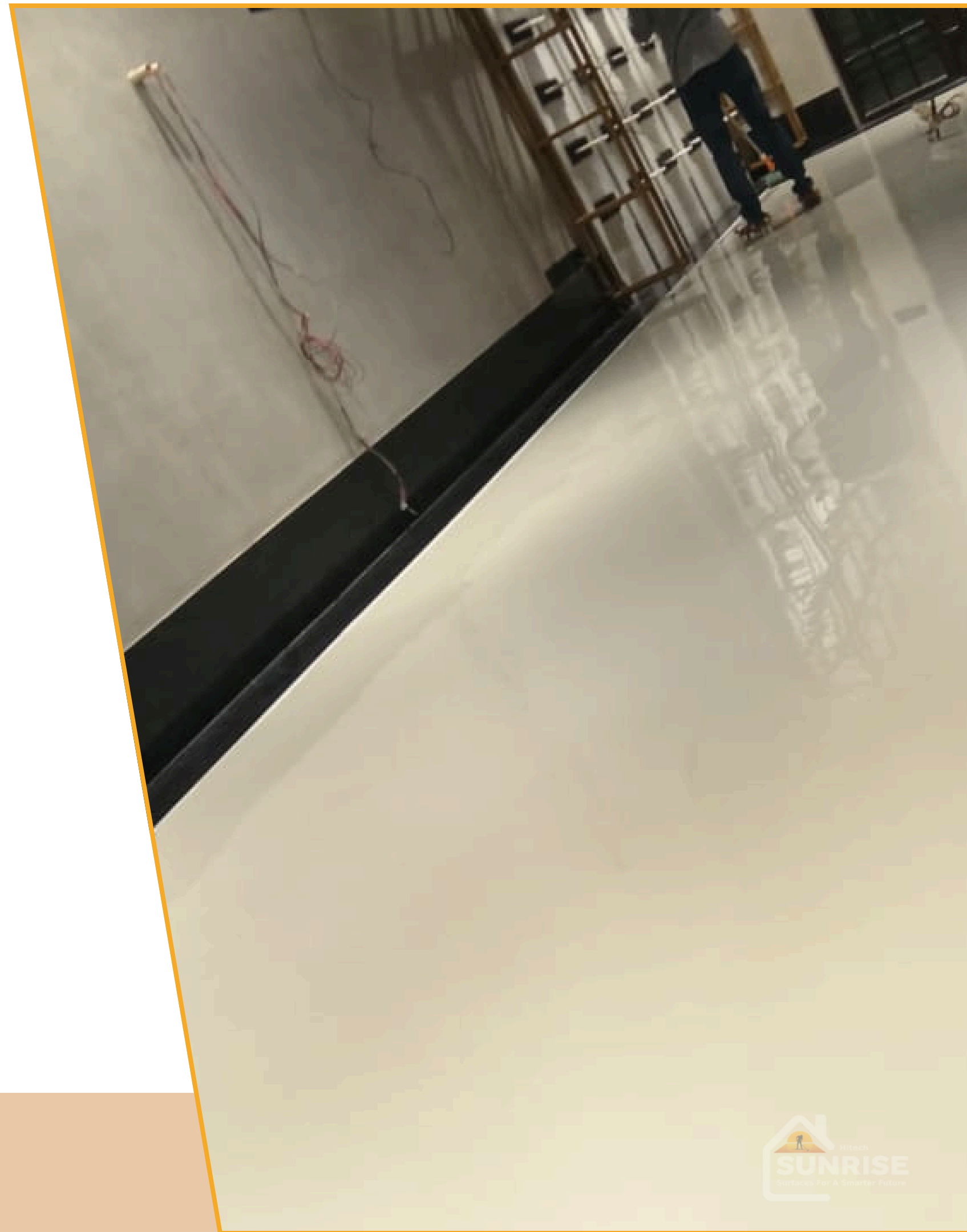
A protective topcoat that provides a thin but tough layer of protection against wear, chemicals, and sunlight.

Benefits:

- UV STABILITY
- SCRATCH RESISTANCE
- FLEXIBLE FINISH

Types of PU Coating

EXPOSED AREA PU COATING



7. METALLIC EPOXY

Its a premium, high-gloss decorative flooring that uses metallic pigments to create a unique, shimmering marble-like effect. It provides exceptional durability and chemical resistance with a seamless, luxurious finish.

Benefits:

- UNIQUE AESTHETICS
- HIGH DURABILITY
- LOW MAINTENANCE



8. CAR PARKING FLOORING

Heavy-duty systems engineered to handle constant vehicle movement, tire abrasion, and chemical spills in parking facilities.

Benefits:

- ANTI-SKID SAFETY
- OIL RESISTANCE
- VISUAL CLARITY

Types of Car Parking Flooring

EPOXY SELF-LEVELING

FLAKES

METALLIC EPOXY



9.SELF-LEVELING

High-flow compounds used to create a perfectly flat and smooth surface over uneven or damaged concrete floors.

Benefits:

- SURFACE FLATNESS
- RAPID APPLICATION
- STRONG BOND



10.RESIN BOUND AGGREGATE

A decorative, permeable system made of natural stones and resin, perfect for eco-friendly and attractive outdoor paving.

Benefits:

- POROUS SURFACE: ALLOWS WATER TO DRAIN NATURALLY, PREVENTING PUDDLES.
- AESTHETIC APPEAL: DELIVERS A SMOOTH, MODERN, AND HIGH-END STONE LOOK.
- UV RESISTANT: COLORS STAY VIBRANT AND DO NOT FADE IN THE SUN.



11.MMA FLOORING

The fastest-curing resin system available, designed for industrial and commercial facilities that cannot afford any downtime.

Benefits:

- ZERO DOWNTIME: CURES IN LESS THAN TWO HOURS FOR IMMEDIATE USE.
- INDUSTRIAL STRENGTH: HIGH RESISTANCE TO CHEMICALS AND HEAVY IMPACTS.
- LOW-TEMP CURE: CAN BE INSTALLED IN WALK-IN FREEZERS OR COLD WEATHER.



12.MICROCONCRETE DECORATIVE

A modern, thin-layer cementitious finish that provides a seamless, industrial-chic look for contemporary interiors.

Benefits:

- SEAMLESS STYLE: CREATES A CLEAN, MINIMALIST AESTHETIC FOR FLOORS AND WALLS.
- LIGHTWEIGHT: PROVIDES A STONE LOOK WITHOUT ADDING STRUCTURAL WEIGHT.
- DESIGN VERSATILITY: AVAILABLE IN VARIOUS TEXTURES AND COLOR WASHES.



13.EXPOSED AGGREGATE

A rustic, slip-resistant finish achieved by exposing the natural stones within the concrete, ideal for outdoor spaces.

Benefits:

- SUPERIOR GRIP: NATURALLY TEXTURED SURFACE PREVENTS SLIPS IN WET AREAS.
- HIGHLY DURABLE: RESISTS HEAVY FOOT TRAFFIC AND HARSH WEATHER.
- NATURAL BEAUTY: REVEALS THE UNIQUE CHARACTER OF EMBEDDED AGGREGATES.



14.SILICONE COATING & STONE WASHING

Restoration and protection services for exterior walls, combining deep cleaning with an invisible water-repellent shield.

Benefits:

- WATER REPELLENT
- BREATHABLE SHIELD
- SURFACE RESTORATION

Types of Silicone Coating & Stone Washing

EXPOSED BUILDING WALL



15.FALSE CEILING

A premium interior enhancement that combines aesthetic elegance with functional benefits like integrated lighting and temperature control.

Benefits:

- SUPERIOR AESTHETICS
- THERMAL INSULATION
- ACOUSTIC COMFORT





THANK YOU

CONTACT US



(+91) 9811250238

(+91) 9911625973



info@sunrisehitech.in

namish@sunrisehitech.in



WWW.SUNRISEHITECH.IN

